

# FLUOPTICS®

European leader in fluorescence imaging

[www.fluoptics.com](http://www.fluoptics.com)



The most gifted  
camera of  
its generation

# FLUOBEBAM®



# The most gifted fluorescence camera of its generation

Thanks to several years of development in collaboration with international clinical teams, FLUOBEAM® was designed to fit in the operating room environment.

**FLUOBEAM® is an integrated fluorescence imaging solution providing the surgeon with a real-time image of the fluorescence in the operative field.**

Its ease of use and ability to analyse images make it a major asset for surgeons.

Excellence at the tip of  
your fingers



FLUOBEAM® is an integrated fluorescence imaging solution  
which provides information to the surgeon during surgery  
and **invisible to the naked eye.**  
It enables surgeons to make better decisions  
**reducing complication rates.**



**Dr Charlotte Ngo**

Gynecological and Breast Cancer Surgery, Hôpital Européen Georges Pompidou, Paris, France

**"The ICG for detection of the SLN in early breast cancer is feasible;  
it is accurate, safe and cheap"**



FLUOBEAM

# Safety: you won't believe your eyes

FLUOBEAM® is a user-friendly system without optical risk. Its optical head is equipped with a class 1 laser as the excitation light source as well as a near-infrared sensitive camera. **A class 1 laser is harmless to the eye even in case of direct exposure.** FLUOBEAM® combines safety and performance: even with a class 1 laser illumination, FLUOBEAM® maintains an unrivalled level of sensitivity which allows to visualize parathyroid glands in autofluorescence.



Éric Vibert, MD

Liver surgery and transplant, Paul-Brousse Hospital, Villejuif, France

"This device gives us a real-time image. For the surgeon, this is like having an extra eye. It's intra-operative augmented reality."



**Pr. Jaume Masia**

Plastic and Aesthetic Surgery,

Hospital de la Santa Creu i Sant Pau, Barcelona, Spain

**"It is essential to understand how the lymphedema works and so FLUOBEAM® is really key for this kind of information. I just can't perform lymphatic surgery without fluorescence imaging."**

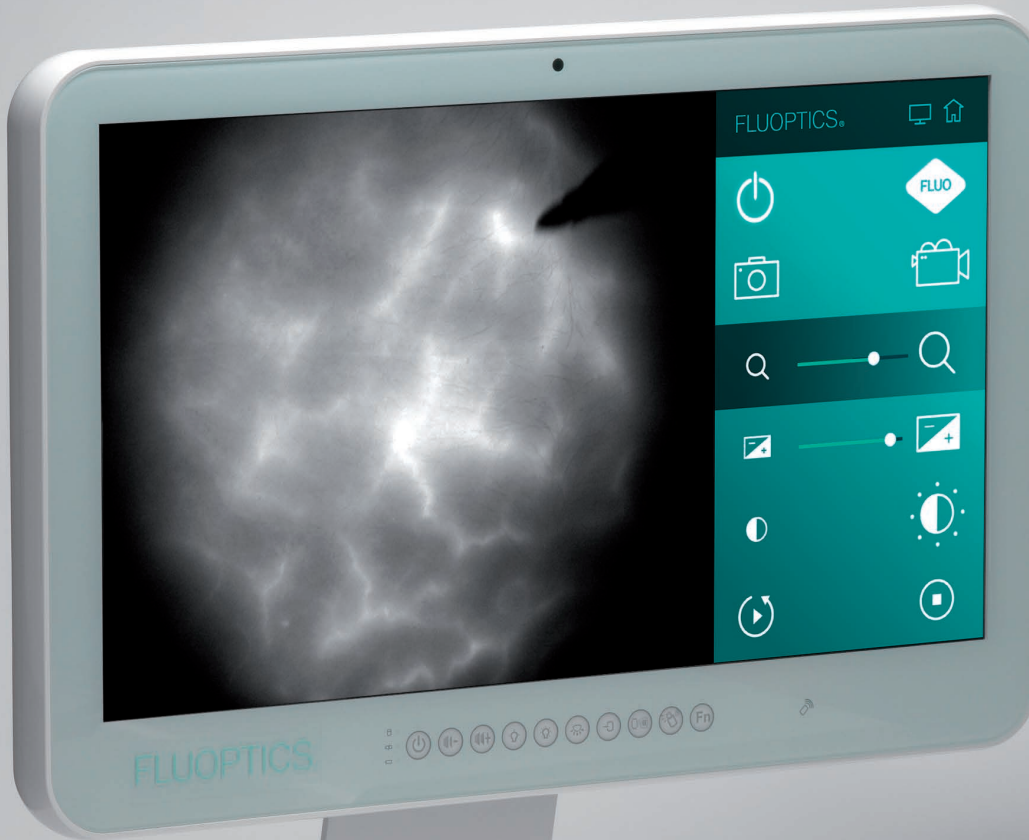




# Ergonomics: a certain taste for freedom

FLUOBEAM® was designed to fit in the operating room environment, **providing the surgeon with an autonomy that does not require an operator's intervention. Surgeons have full control over the acquisition and visualization of the image with a simple push on the optical head.**







## Tailor-made images

FLUOSOFT™ imaging software is organized according to the different indication, **so that surgeons can get the expected images in real-time:**

high sensitivity for low-fluorescence-signal applications,  
pseudo-colorization with relative quantification to assess perfusion,  
automatic detection of perforator vessels before flap dissection,  
panoramic images of the lymphatic drainage.

This approach, combined with proven acquisition protocols, prevents mishandling and **ensures great reliability of the results.**





# FLUOBEAM<sup>®</sup>

## integrated solution

**Thousands of procedures already done.**

Plastic and reconstructive surgery.

Parathyroid detection by autofluorescence  
and perfusion assessment.

Lymphedema, wound care.

Partial hepatectomy and liver transplantation.

Sentinel lymph node biopsy for breast cancer and melanoma.



# Installed Systems

The FLUOPTICS® technology is already used in:

France, Germany, the UK, Switzerland, Belgium, Italy, Spain, Morocco, Denmark, Finland, Greece, the Netherlands, Poland, Singapore, the US, Kuwait, Thailand, Taiwan, Hong Kong and India.

**100**  
machines

**10 000**  
procedures

**20**  
countries



**FLUOBEAM® is a Class IIa medical device,  
manufactured by Fluoptics – CE N°0197.**

FLUOBEAM® is indicated to visualize on a screen the flow, the distribution and/or the accumulation of Indocyanine green (ICG) before, during and after surgery for the indications such as: visualization of the blood flow, visualization of the lymphatic flow, visualization and identification of the bile ducts during hepatobiliary surgery, visualization and detection of primary liver tumors and/or hepatic metastases. FLUOBEAM® is also indicated to facilitate the visualization of parathyroid glands by auto-fluorescence (natural fluorescence without ICG injection) during thyroid and parathyroid surgeries.

Before the first use, user must read the medical device instructions for use and its label.

Brochure\_FB800\_02/2018\_EN\_v3

**© 2018 FLUOPTICS - All right reserved.**

Artistic direction : Patrick Delgado - welcome@inooui.design.com

Photos : Daniel Michon - artechnique@artechnique.fr

life  
behind  
light



FLUOPTICS®

[www.fluoptics.com](http://www.fluoptics.com)

**EUROPE**  
**Fluoptics**

BHT – Bât 52,  
7, parvis Louis Néel, CS 20050,  
38040 Grenoble Cedex 9 – FRANCE  
Tel: +33 438 782 878

**USA**  
**Fluoptics Imaging Inc.**

185 Alewife Brook,  
Parkway, #410 Cambridge  
MA 02138 – USA  
Tel: (561) 843 0220